

# THE VIRGINIA

## 2,168 S.F.



ELEVATION A-10



ELEVATION D-10  
OPT. METAL ROOF SHOWN

OPT. CARRIAGE GARAGE  
DOOR SHOWN



ELEVATION B-10

OPT. CARRIAGE GARAGE  
DOOR SHOWN



ELEVATION E-10

OPT. DOUBLE GARAGE  
DOORS SHOWN



ELEVATION C-10  
OPT. METAL ROOF SHOWN

OPT. 2-CAR SIDE LOAD  
GARAGE SHOWN

### ELEVATIONS A,B, & C

1ST FLOOR = 906 S.F.  
2ND FLOOR = 1,262 S.F.  
TOTAL = 2,168 S.F.

### ELEVATIONS D & E

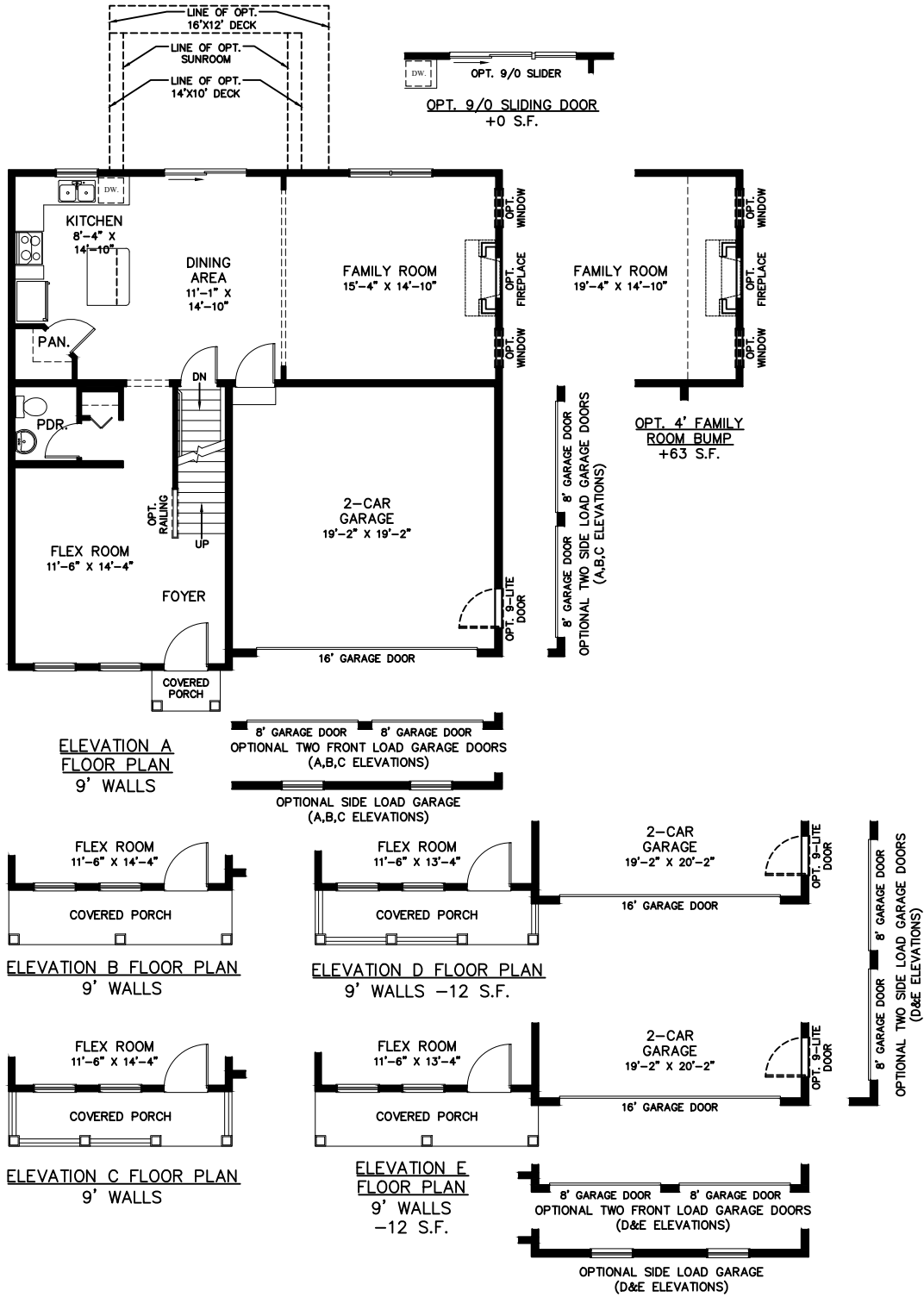
1ST FLOOR = 890 S.F.  
2ND FLOOR = 1,266 S.F.  
TOTAL = 2,156 S.F.

**Garman**  
BUILDERS



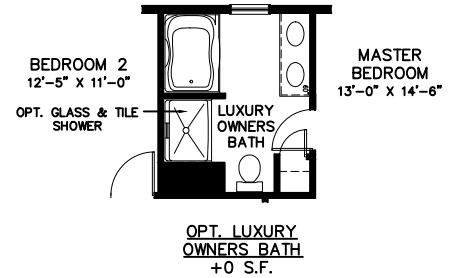
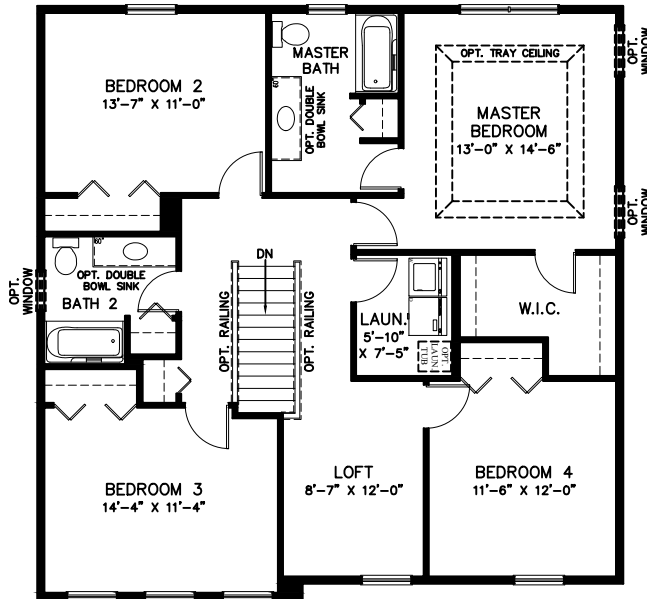
4-26-2019

# THE VIRGINIA

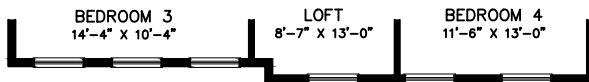


## FIRST FLOOR

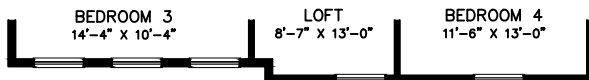
# THE VIRGINIA



ELEVATION A,B,C FLOOR PLAN  
8' WALLS



ELEVATION D FLOOR PLAN  
8' WALLS -12 S.F.



ELEVATION E FLOOR PLAN  
8' WALLS -12 S.F.

ALL AREA DIMENSIONS ARE APPROXIMATE. FLOOR PLANS AND ELEVATIONS MAY SHOW OPTIONAL ITEMS NOT INCLUDED WITH BASE PRICE. THE BUILDER RESERVES THE RIGHT TO IMPROVE THE PLANS BY REVISING THE SPECIFICATIONS AND DIMENSIONS WITHOUT NOTICE.

THESE PLANS ARE THE PRIVATE PROPERTY OF GARMAN BUILDERS, INC. ANY USE OR REPRODUCTION OF THESE PLANS, IN PART OR WHOLE, WITHOUT THE EXPRESSED WRITTEN CONSENT OF GARMAN BUILDERS, INC. IS STRICTLY PROHIBITED.

## SECOND FLOOR