

THE DORCHESTER

2,600 S.F.



ELEVATION A-10



ELEVATION D-10



ELEVATION B-10

OPT. METAL ROOF SHOWN



ELEVATION E-10

OPT. METAL ROOF SHOWN
OPTIONAL SIDE LOAD GARAGE SHOWN



ELEVATION B-20

OPT. METAL ROOF SHOWN
OPTIONAL 2-CAR FRONT LOAD GARAGE SHOWN



ELEVATION F-10

OPT. METAL ROOF SHOWN
OPTIONAL SIDE LOAD GARAGE SHOWN



ELEVATION C-10

OPT. CARRIAGE GARAGE DOORS SHOWN

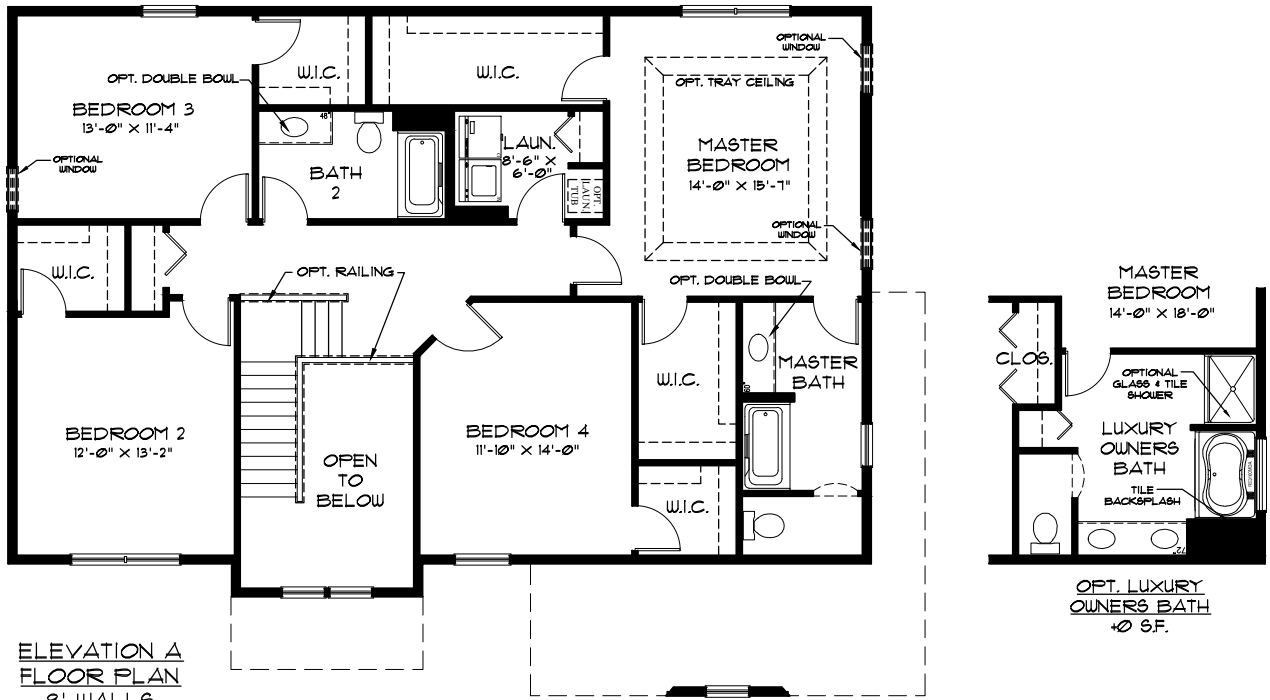
ELEVATIONS A - F

1ST FLOOR	= 1,235 S.F.
2ND FLOOR	= 1,365 S.F.
TOTAL	= 2,600 S.F.

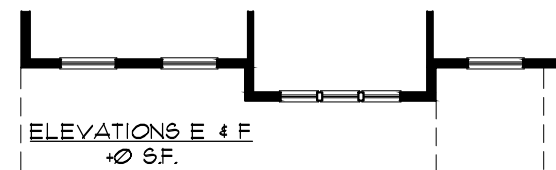
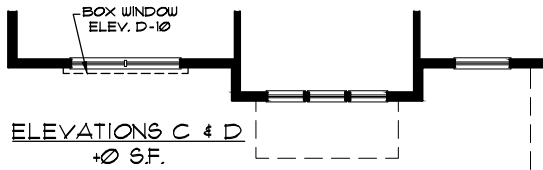
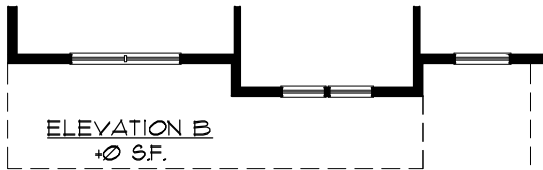


"CREATORS OF BETTER HOMES"

THE DORCHESTER



ELEVATION A
 FLOOR PLAN
 8' WALLS



SECOND FLOOR